

FEATURES AND SPECIFICATIONS

Features and Benefits

- Compatible with PCMCIA and JEIDA standards
- Dual beam contact design
- Various offset tails

Reference Information

Packaging: Tube
 Mates With: PC card headers
 Designed In: Millimeters

Electrical

Voltage: 100V
 Current: 0.5A
 Contact Resistance: 40mΩ max.
 Dielectric Withstanding Voltage: 500V AC
 Insulation Resistance: 1000 MΩ min.

Mechanical

Contact Retention to Housing: 4.9N min.
 Mating Force: 39.2N max.
 Unmating Force: 6.67N min.
 Durability: 10,000 cycles

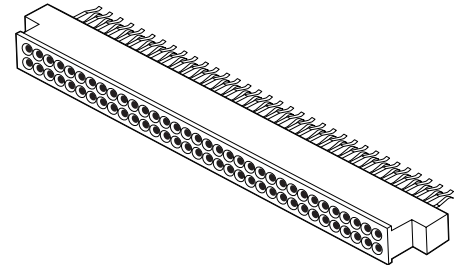
Physical

Housing: Black glass-filled LCP, UL 94V-0
 Contact: Beryllium Copper Alloy
 Plating: Gold over Palladium Nickel on contact area, Tin/Lead on solder tails, Nickel underplate overall
 Operating Temperature: -20 to +90°C

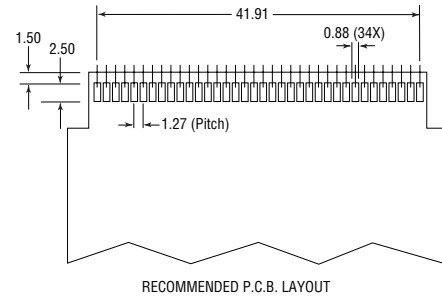
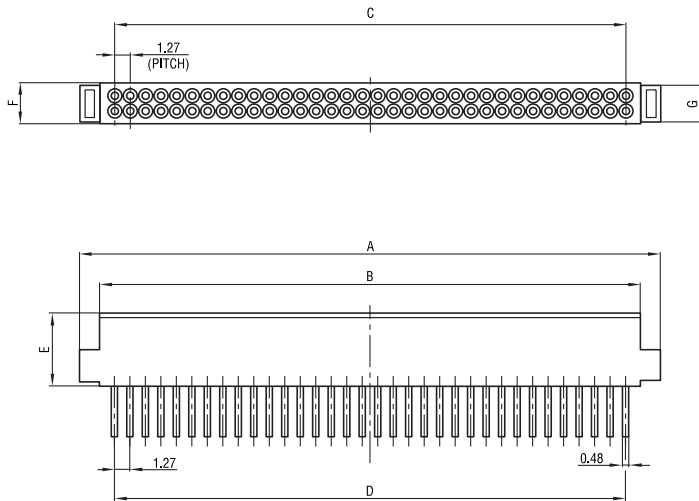
molex® 1.27mm (.050") Pitch PC Card Receptacle

89074

Straddle Mount, Standard and Offset Tail Versions



CATALOG DRAWING (FOR REFERENCE ONLY)



ORDERING INFORMATION AND DIMENSIONS

Circuits	Order No.	Offset Style	Dimension						
			A	B	C	D	E	F	G
68	89074-6801	1	47.46 (1.869)	44.46 (1.750)	41.91 (1.650)	41.91 (1.650)	6.60 (.260)	3.30 (.130)	2.70 (.106)
	89074-6821	2	47.46 (1.869)	44.46 (1.750)	41.91 (1.650)	41.91 (1.650)	6.60 (.260)	3.30 (.130)	2.70 (.106)
	89074-6831	3	47.46 (1.869)	44.46 (1.750)	41.91 (1.650)	41.91 (1.650)	6.60 (.260)	3.30 (.130)	2.70 (.106)
	89074-6851	5	47.46 (1.869)	44.46 (1.750)	41.91 (1.650)	41.91 (1.650)	6.60 (.260)	3.30 (.130)	2.70 (.106)

