

FEATURES AND SPECIFICATIONS

Features and Benefits

- Fully shielded for maximum EMI/RFI protection
- Available in 2 styles: fork lock for additional PCB retention and fitting nail for true SMT
- Dual-cantilever contact design for repeated cycling
- Preloaded SMT leads help insure coplanarity
- Positive polarization

Reference Information

Product Specification: PS-87391
Packaging: Tube
Designed In: Millimeters

Electrical

Voltage: 30V
Current: 2.0A
Contact Resistance: 30mΩ max.
Dielectric Withstanding Voltage: 250V AC rms
Insulation Resistance: 1000 MΩ min.

Mechanical

Contact Insertion Force: 500g (17.63 oz)
Contact Retention to Housing: 1kg (2.20 lb) min.
Mating Force: 4.5kg (9.92 lb) max.
Unmating Force: 0.9kg (1.98 lb) min.
Durability: 500 cycles

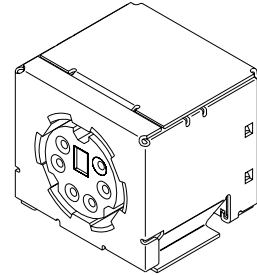
Physical

Housing: Glass-filled polyester, UL 94V-0
Contact: Phosphor Bronze
Plating: 0.76μm (30μ") min. select Gold with Tin/Lead on PC tails
Operating Temperature: -40 to +105°C

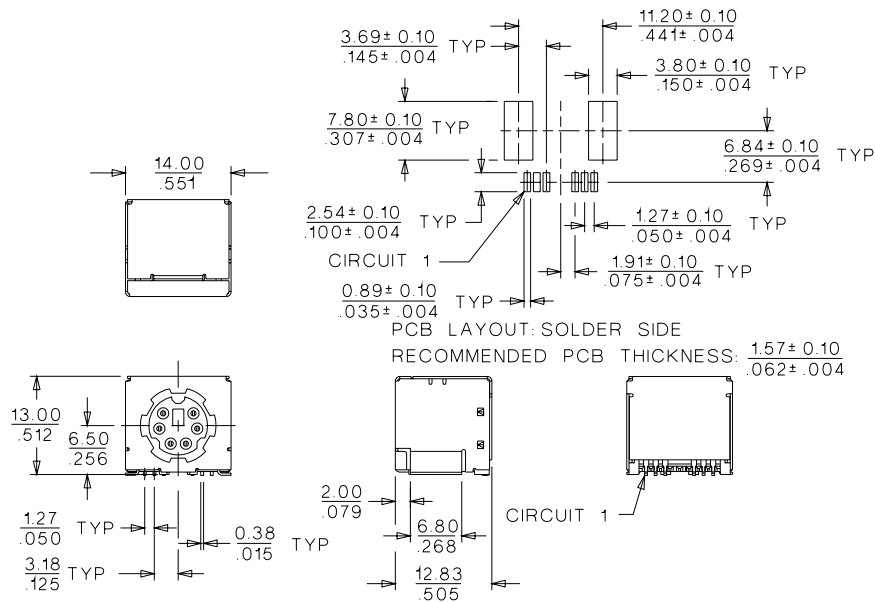
molex® Mini-DIN
PCB Receptacle

87391

**SMT, Full Shield Design
With Fork Lock or Fitting Nail**



CATALOG DRAWING (FOR REFERENCE ONLY)



ORDERING INFORMATION

Circuits	Order No.	
	Fork Lock	Fitting Nail
4	87391-6401	87391-0401
6	87391-6601	87391-0601
8	87391-6801	87391-0801