

FEATURES AND SPECIFICATIONS

Features and Benefits

- Parallel, perpendicular and in-line interconnections
- Fork boardlock provides excellent mechanical PCB retention before and after processing
- Integral blind mate capabilities with $\pm 2.00\text{mm}$ (.079") misalignment tolerances
- Card slot accommodates standard 1.57mm (.062") PCB

Reference Information

Product Specification: PS-87018-0001
 Packaging: Tray
 UL File No.: E29179
 CSA File No.: LR19980
 Mates With: [87012](#) and [87571](#)
 Designed In: Millimeters

Electrical

Voltage: 30V AC
 Current: 1.0A
 Contact Resistance: 30m Ω max.
 Dielectric Withstanding Voltage: 500V AC
 Insulation Resistance: 1000 M Ω min.

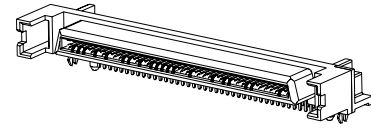
Mechanical

Contact Retention to Housing: 4.4N (.99 lb) min.
 Mating Force: 70.6N (15.87 lb) max.
 Unmating Force: 11.77N (2.65 lb) min.
 Durability: 500 cycles

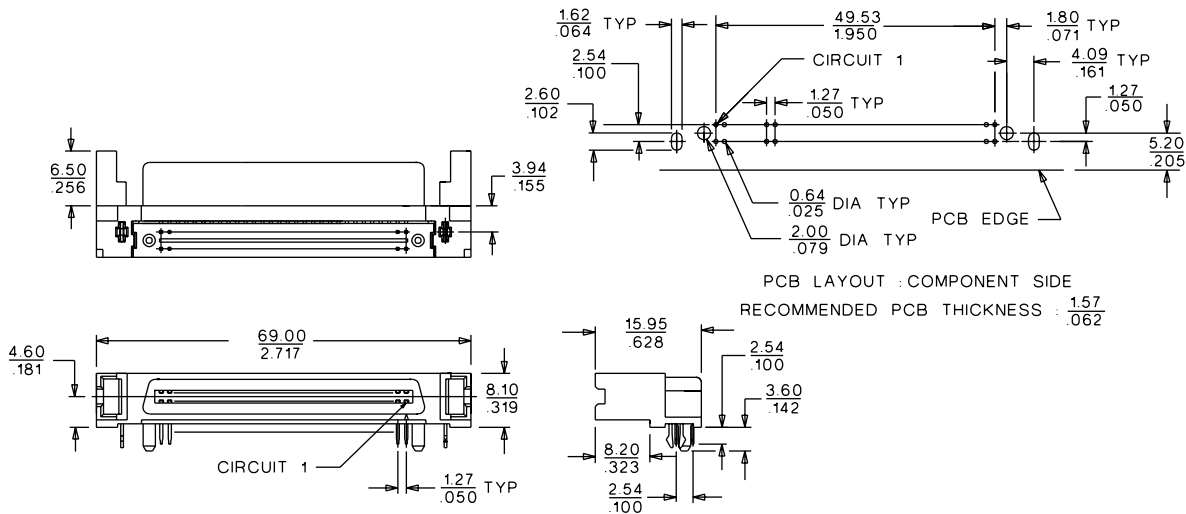
Physical

Housing: High-temperature thermoplastic, UL 94V-0
 Contact: Copper Alloy
 Plating: Contact Area—0.76 μm (30 μ ") Gold
 Solder Tail Area—2.54 μm (100 μ ") Tin
 Underplating—Nickel
 Operating Temperature: -55 to +105°C

molex® 1.27mm (.050") Pitch
EBBI™ 50D
Receptacle

87018**Right Angle, Through Hole Reverse D with Towers**

CATALOG DRAWING (FOR REFERENCE ONLY)



ORDERING INFORMATION AND DIMENSIONS

Circuits	Order No.
80	87018-8061