

FEATURES AND SPECIFICATIONS

Features and Benefits

- Short circuit safe reversed contacts
- Features 2 additional system levels for first-make/last-break life insertion
- Press fit mounting with application tool for female connector on backplane
- Flat rock press in for male connector on daughtercard
- Plain East-West routing on backplane
- Pin layout 2.5mm hard metric
- Selective loading possible
- 8 contact points per male <-> female circuit
- Current distribution
- Preloaded contacts

Electrical

Voltage: 100V/AC*
 Current: 15A @ +70°C
 Contact Resistance: 1mΩ max.
 Dielectric Withstanding Voltage: 1400Vrms
 Insulation Resistance: 10¹² MΩ min.

Mechanical

Mating Force: 35N (7.9 lb) max. (fully loaded)
 Unmating Force: 4 circuits loaded—14N (3.11 lb) min.
 Creeping Distance: 1.40mm (.055") min. @ CT1>175
 Wipe: 6.00mm (.236")
 For FMLB circuit—7.75mm (.305")

Physical

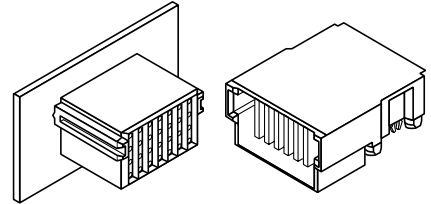
Housing: Polycarbonate, UL 94V-0
 Color: Gray RAL 7032
 Male Contacts: Phosphor Bronze
 Female Contacts: Impr. Phosphor Bronze
 Plating: 5μm/200μm Silver or Nickel

* More depending on environmental and safety requirements

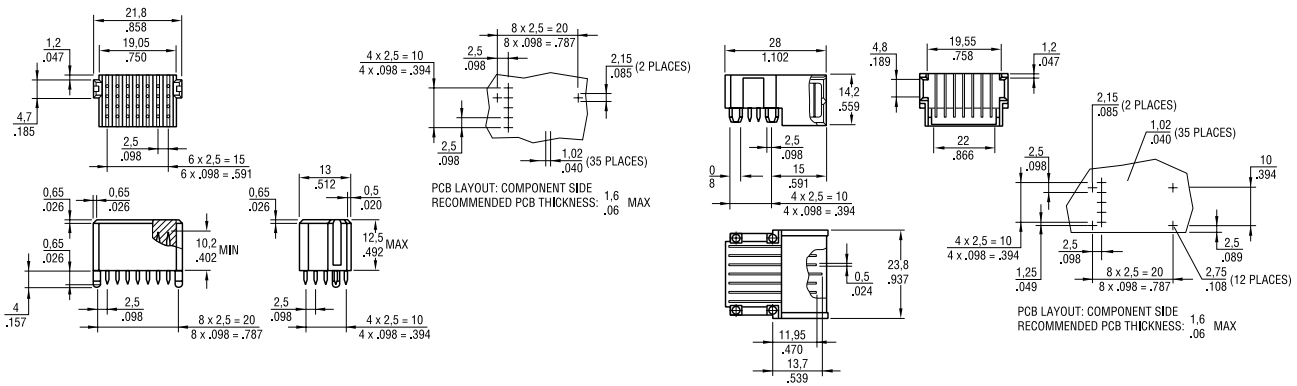
molex® 2.50mm (.098") Pitch Omnigrid® Power Module

85160

IEC 1076



CATALOG DRAWING (FOR REFERENCE ONLY)



ORDERING INFORMATION AND DIMENSIONS

| Circuits | Loaded | Male FMLB | Order No. | |
|-----------|---------------------|-----------|------------|-------------|
| | | | Male | Female |
| 4 | 1, 3, 5, 7 | none | 85160-0062 | 85160-0012 |
| 7 | 1, 2, 3, 4, 5, 6, 7 | --345-- | 85160-0050 | 85160-0000 |
| 7 | 1, 2, 3, 4, 5, 6, 7 | 1-----7 | 85160-0048 | 85160-0000 |
| 7 | 1, 2, 3, 4, 5, 6, 7 | ----4---- | 85160-0036 | 85160-0000 |
| 7 | 1, 2, 3, 4, 5, 6, 7 | none | 85160-0024 | 85160-0000 |
| Pack Size | | | 72 pcs/box | 144 pcs/box |

Note: Omnigrid Power Module male connectors can be pressed in with a flat stamp (flat rock)