

FEATURES AND SPECIFICATIONS

Features and Benefits

- Sizes 8 to 64 circuits
- Locking shoulders according to DIN 41651
- Polarized
- Friction lock

Reference Information

Product Specification: PS-99020-0001
 Packaging: Bag
 UL File No.: E29179
 CSA File No.: LR19980
 Mates With: 5576, 5578 and 90130
 Use With: 90119
 Designed In: Inches

Electrical

Voltage: 350V
 Current: 3.0A max.
 Contact Resistance: 20mΩ max.
 Insulation Resistance: 1000 MΩ min.

Mechanical

Contact Retention to Housing: 15N min.
 Normal Force: 1N

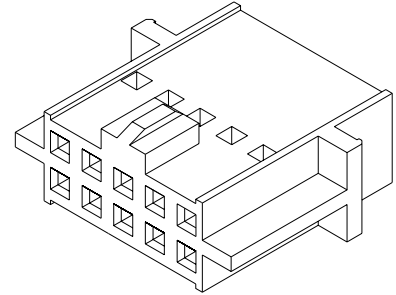
Physical

Housing: Black polyphenylene oxide, UL 94V-1
 Operating Temperature: -55 to +105°C



2.54mm (.100") Pitch C-Grid III™ Crimp Connector Housing

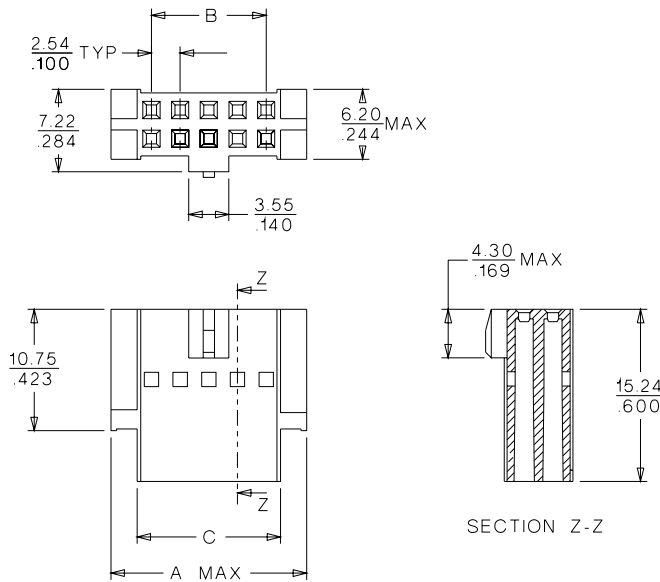
90160 Dual Row



2.54mm (.100") Pitch

CATALOG DRAWING (FOR REFERENCE ONLY)

Not For Use With Molex SL™ Components



Delivered on a carrier with 20 pieces per strip.

Actual Size **Universal Polarizing Pin**
40713-1
 Order No. 15-04-0292

ORDERING INFORMATION AND DIMENSIONS

Circuits	Order No.	Dimension		
		A	B	C
8	90160-0108	14.93 (.588)	7.62 (.300)	10.16 (.400)
10	90160-0110	17.47 (.688)	10.16 (.400)	12.70 (.500)
12	90160-0112	20.01 (.788)	12.70 (.500)	15.24 (.600)
14	90160-0114	22.55 (.888)	15.24 (.600)	17.78 (.700)
16	90160-0116	25.09 (.988)	17.78 (.700)	20.32 (.800)
20	90160-0120	30.17 (1.188)	22.86 (.900)	25.40 (1.000)
26	90160-0126	37.79 (1.488)	30.48 (1.200)	33.02 (1.300)
34	90160-0134	47.95 (1.888)	40.64 (1.600)	43.18 (1.700)
40	90160-0140	55.57 (2.188)	48.26 (1.900)	50.80 (2.000)
50	90160-0150	68.27 (2.688)	60.96 (2.400)	63.50 (2.500)
60	90160-0160	80.97 (3.188)	73.66 (2.900)	76.20 (3.000)
64	90160-0164	86.05 (3.388)	78.74 (3.100)	81.28 (3.200)

For other available circuit sizes contact Molex