

FEATURES AND SPECIFICATIONS

Features and Benefits

- Sizes 8 to 64 circuits
- Contact and plating orientation according to DIN 41651
- North/south contact orientation avoids overstress
- High pin retention
- Polarized
- Friction lock

Reference Information

Product Specification: PS-99020-0001
 Packaging: Tray
 Mates With: 90143 and 90160
 Designed In: Inches

Electrical

Voltage: 350V max.
 Current: 3.0A
 Contact Resistance: 20mΩ max.
 Insulation Resistance: 1000 MΩ min.

Mechanical

Contact Retention to Housing: 20N (2.0kgf) min.
 Mating Force: 1N max. Gold and 3N max. Tin
 Unmating Force: 0.2N min. Gold and 0.2N min. Tin
 Normal Force: 1N

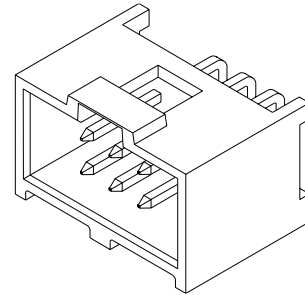
Physical

Housing: Black glass-filled polyester, UL 94V-0
 Contact: Copper Alloy, 0.64mm (.025") square pins
 Plating: See Table
 Operating Temperature: -55 to +125°C

molex® 2.54mm (.100") Pitch C-Grid III™ Shrouded Header

90130

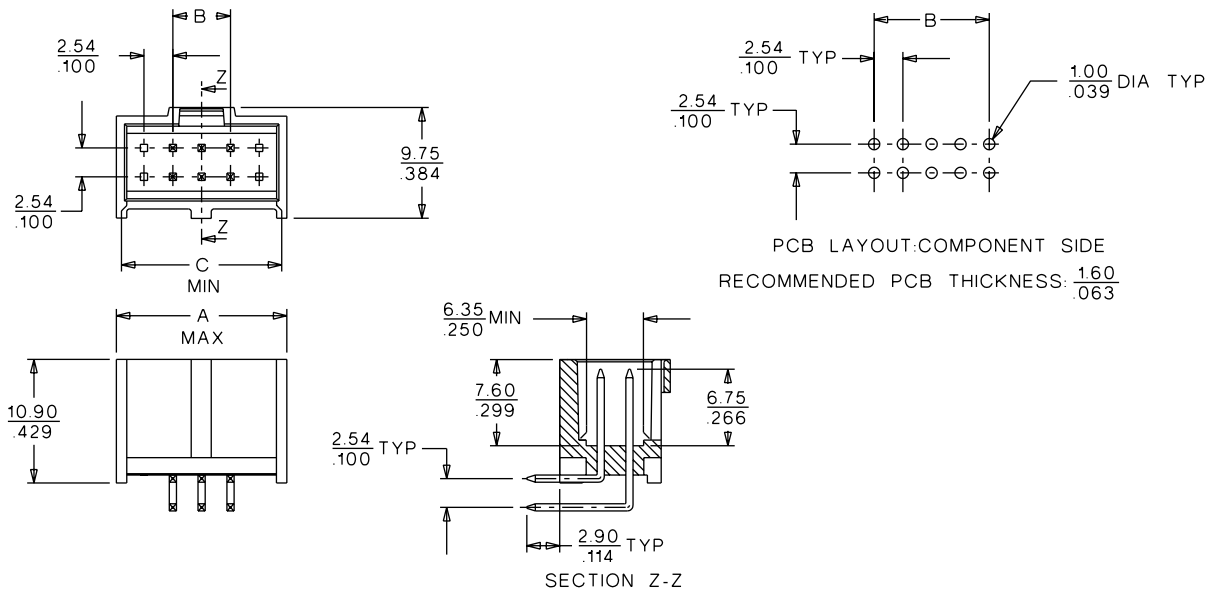
Dual Row, Right Angle Voided Pin



2.54mm (.100") Pitch

CATALOG DRAWING (FOR REFERENCE ONLY)

Not For Use With Molex SL™ Components



ORDERING INFORMATION AND DIMENSIONS

Circuits	Order No.			Dimension		
	Plating A	Plating E	Plating F	A	B	C
8	90130-4112	90130-4212	90130-4312	17.96 (.707)	7.62 (.300)	15.54 (.612)
10	90130-4114	90130-4214	90130-4314	20.50 (.807)	10.16 (.400)	18.08 (.712)
12	90130-4116	90130-4216	90130-4316	23.04 (.907)	12.70 (.500)	20.62 (.812)
14	90130-4118	90130-4218	90130-4318	25.58 (1.007)	15.24 (.600)	23.16 (.912)
16	90130-4120	90130-4220	90130-4320	28.12 (1.107)	17.78 (.700)	25.70 (1.012)
18	90130-4122	90130-4222	90130-4322	30.66 (1.207)	20.32 (.800)	28.24 (1.112)
20	90130-4124	90130-4224	90130-4324	33.20 (1.307)	22.86 (.900)	30.78 (1.212)

Circuits	Order No.			Dimension		
	Plating A	Plating E	Plating F	A	B	C
26	90130-4130	90130-4230	90130-4330	40.82 (1.607)	30.48 (1.200)	38.40 (1.512)
30	90130-4134	90130-4234	90130-4334	43.36 (1.707)	35.56 (1.400)	40.94 (1.612)
34	90130-4138	90130-4238	90130-4338	50.98 (2.007)	40.64 (1.600)	48.59 (1.912)
40	90130-4144	90130-4244	90130-4344	58.60 (2.307)	48.26 (1.900)	56.18 (2.212)
50	90130-4154	90130-4254	90130-4354	71.30 (2.807)	60.96 (2.400)	68.88 (2.712)
60	90130-4164	90130-4264	90130-4364	84.00 (3.307)	73.66 (2.900)	81.58 (3.212)
64	90130-4168	90130-4268	90130-4368	89.08 (3.507)	78.74 (3.100)	86.66 (3.412)

For other available circuit sizes contact Molex

Plating A: 4µm (160µ") Tin/Lead over Nickel

Plating E: 0.38µm (15µ") selective Gold over Nickel and 4µm (160µ") Tin/Lead over Nickel

Plating F: 0.76µm (30µ") selective Gold over Nickel and 4µm (160µ") Tin/Lead over Nickel