

## FEATURES AND SPECIFICATIONS

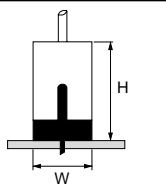
### Features and Benefits

- Sizes 2 to 15 circuits
- Locking ribs and holes accept either positive or friction-locking housings
- High guide walls protect terminals and facilitate mating
- Kinked PC tails provide secure PCB retention

### Reference Information

Packaging: Bag  
 Mates With: [51102](#), [51103](#), and [51163](#)  
 Designed In: Millimeters

**Mating Dimensions**  
 1.53375/51102/50351  
 H=11.5mm W=6.8mm  
 2.53375/51103/50351  
 H=11.5mm W=7.6mm



### Electrical

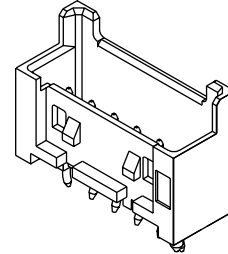
Voltage: 250V  
 Current: 3.0A  
 Contact Resistance: 20mΩ max.  
 Dielectric Withstanding Voltage: 1000V AC/1 min.  
 Insulation Resistance: 1000 MΩ min.

### Physical

Housing: Glass-filled PBTP, UL 94V-0  
 Contact: Phosphor Bronze  
 Plating: Tin  
 Operating Temperature: -40 to +105°C

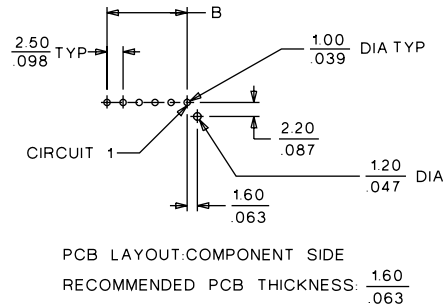
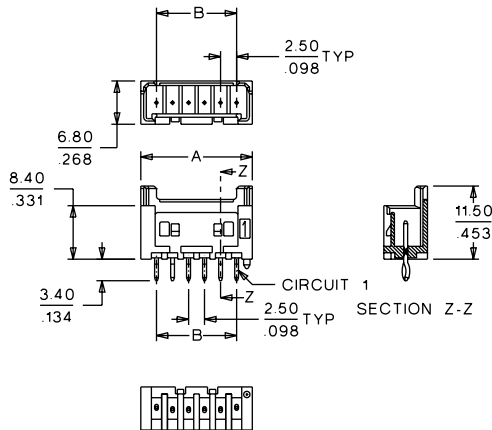
# molex® 2.50mm (.098") Pitch Wire-to-Board Header

## 53375 Vertical



B  
2.00 to 2.50mm (.079 to .098") Pitch

## CATALOG DRAWING (FOR REFERENCE ONLY)



## ORDERING INFORMATION AND DIMENSIONS

| Circuits | Order No.  | Dimension    |               |
|----------|------------|--------------|---------------|
|          |            | A            | B             |
| 2        | 53375-0210 | 7.4 (.291)   | 2.50 (.098)   |
| 3        | 53375-0310 | 9.9 (.390)   | 5.00 (.197)   |
| 4        | 53375-0410 | 12.4 (.488)  | 7.50 (.295)   |
| 5        | 53375-0510 | 14.9 (.587)  | 10.00 (.394)  |
| 6        | 53375-0610 | 17.4 (.685)  | 12.50 (.492)  |
| 7        | 53375-0710 | 19.9 (.783)  | 15.00 (.591)  |
| 8        | 53375-0810 | 22.4 (.882)  | 17.50 (.689)  |
| 9        | 53375-0910 | 24.9 (.980)  | 20.00 (.787)  |
| 10       | 53375-1010 | 27.4 (1.079) | 22.50 (.886)  |
| 11       | 53375-1110 | 29.9 (1.177) | 25.00 (.984)  |
| 12       | 53375-1210 | 32.4 (1.276) | 27.50 (1.083) |
| 13       | 53375-1310 | 34.9 (1.374) | 30.00 (1.181) |
| 14       | 53375-1410 | 37.4 (1.472) | 32.50 (1.280) |
| 15       | 53375-1510 | 39.9 (1.571) | 35.00 (1.378) |