

FEATURES AND SPECIFICATIONS

Features and Benefits

- Sizes 2 to 15 circuits
- Locking windows provide secure mating

Reference Information

Packaging: Bag
 UL File No.: E29179
 CSA File No.: LR19980
 Mates With: [51004](#)
 Designed In: Millimeters

Electrical

Voltage: 125V
 Current:

AWG	24	26	28	30-34
Amperes	2.0	1.5	1.0	0.5

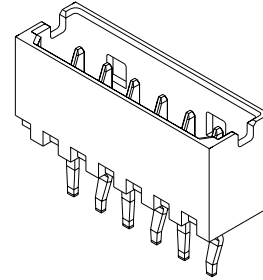
Contact Resistance: 20mΩ max.
 Dielectric Withstanding Voltage: 500V AC/1 min.
 Insulation Resistance: 1000 MΩ min.

Physical

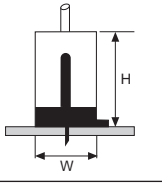
Housing: Glass-filled 6/6 nylon, UL 94V-0
 Contact: Phosphor Bronze
 Plating: Tin
 Operating Temperature: -20 to +85°C

molex® 2.00mm (.079") Pitch Wire-to-Board Header

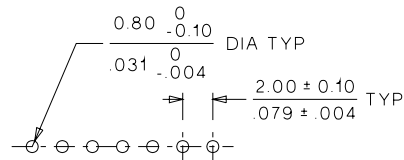
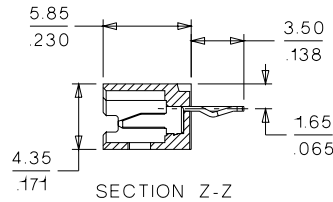
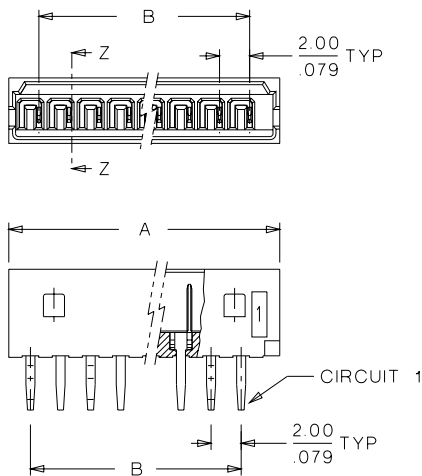
53014 Vertical



Mating Dimensions
 53014 • 51004 • 50011
 H=7.6mm W=4.4mm



CATALOG DRAWING (FOR REFERENCE ONLY)



PCB LAYOUT: COMPONENT SIDE
 RECOMMENDED PCB THICKNESS : 1.60 ± 0.10 / .063 ± .004

ORDERING INFORMATION AND DIMENSIONS

Circuits	Order No.	Dimension	
		A	B
2	53014-0210	6.00 (.236)	2.00 (.079)
3	53014-0310	8.00 (.315)	4.00 (.157)
4	53014-0410	10.00 (.394)	6.00 (.236)
5	53014-0510	12.00 (.472)	8.00 (.315)
6	53014-0610	14.00 (.551)	10.00 (.394)
7	53014-0710	16.00 (.630)	12.00 (.472)
8	53014-0810	18.00 (.709)	14.00 (.551)
9	53014-0910	20.00 (.787)	16.00 (.630)
10	53014-1010	22.00 (.866)	18.00 (.709)
11	53014-1110	24.00 (.945)	20.00 (.787)
12	53014-1210	26.00 (1.024)	22.00 (.866)
13	53014-1310	28.00 (1.102)	24.00 (.945)
14	53014-1410	30.00 (1.181)	26.00 (1.024)
15	53014-1510	32.00 (1.260)	28.00 (1.102)

B

2.00 to 2.50mm (.079 to .098") Pitch